

Catalogue



Abu Dhabi Art 2022

The Guild

Art Gallery

Booth A 9

The Guild
1028, Ranjanpada,
Mandwa Alibaug Road, Alibaug
402201
www.guildindia.com



Contextures

Rakhi Peswani / Shibu Natesan / T. V. Santhosh

Contextures is an exhibition that showcases artworks that are a visual assemblage of the real and surreal surroundings in distinct visual languages. This selection of drawings and paintings has myriad elements that are woven together and multiple narratives that they present – the historical, the mystical and the biographical. T. V. Santhosh's watercolours transform objects from daily life into mysterious props by their association with unseen events or persons. Shibu Natesan's paintings capture stillness in mundane surroundings, setting them within a visual interplay of peculiar realism that evokes intimacy and familiarity. Rakhi Peswani constructs forms inspired from the flora seen around her through playing with the solidity and lightness of her objects. Artists Peswani, Santhosh and Natesan create a contexture of visual repertoire of objects that invoke unique vocabularies and meanings.

Rakhi Peswani

Rakhi Peswani, born 1977, completed her BFA in Painting and her MFA in Ceramic Sculpture from the M. S. University, Baroda, in 2000 and 2003 respectively.

Peswani has shown her works at several institutional shows, including the Mardin Biennial, Turkey, 2022; *Connecting Threads*, Dr. Bhau Daji Lad Museum, Mumbai, 2018; Colombo Art Biennale, Sri Lanka, 2014; *Fiber Visions*, Hangzhou Triennial of Fibre Arts, 2013; *Fruits of Labour: A Monument to Exhaustion*, Hangzhou Triennial of Fibre Arts, 2013; *Zones of Contact*, Kiran Nadar Museum of Art, Noida, 2013; *Bodies/Subterrain (Eurydice & Sita)*, Vrije Academie voor Beeldende Kunsten, The Hague, 2011; *Generation in Transition: New Art from India*, Zachęta National Gallery of Art, Warsaw, Poland, and Contemporary Art Centre, Vilnius, Lithuania, 2011; *Triad: Introspection, Observation and Tradition*, Loveland Museum, Colorado, USA; among others.

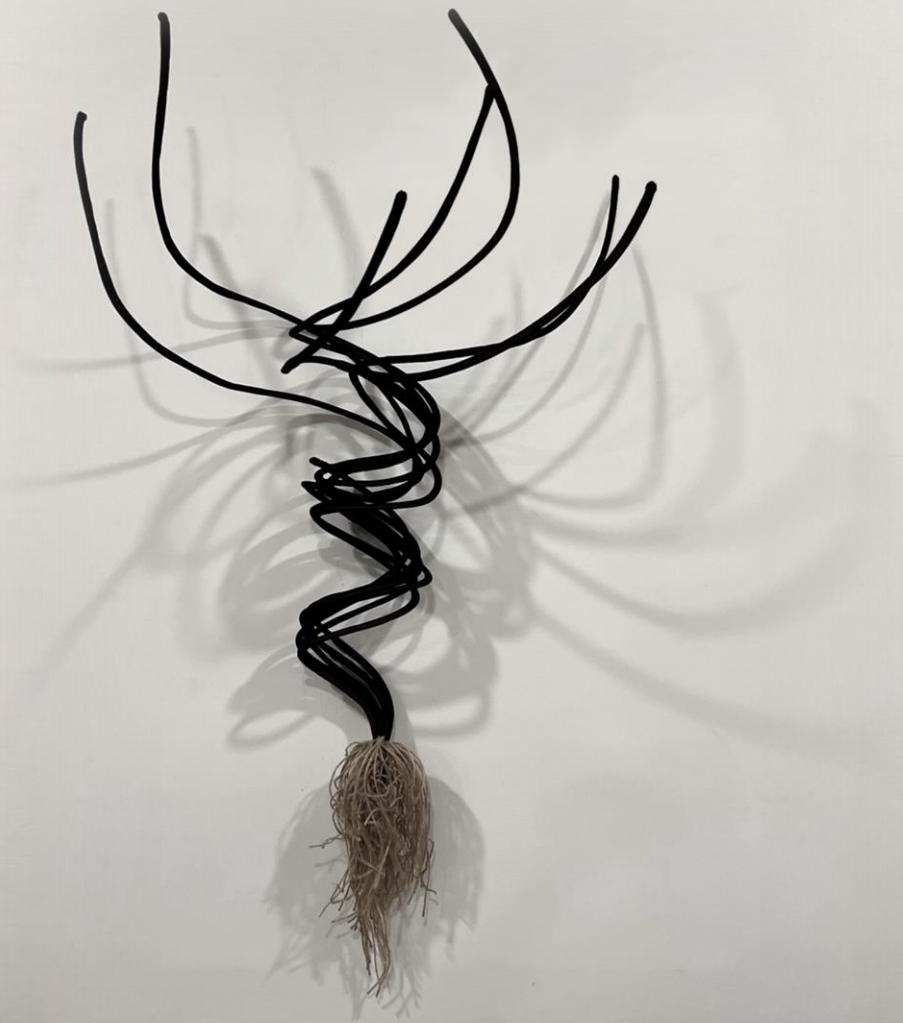
Recent solo exhibitions are *Incisions Inflections Aberrations*, Gallery Sumukha, Bangalore, 2020; *Conditions of Infirmary*, The Guild, Mumbai, 2018–19; *Anatomy of Silence*, The Guild, Mumbai, 2013; *Matters Under the Skin*, Asia One, Hong Kong International Art Fair, presented by The Guild. Some of her recent group exhibitions include *Past-Present-Continuous: 25 Years of The Guild*, The Guild at Bikaner House, New Delhi, 2022; *(Me)(Mory)*, Vadehra Art Gallery, 2021; *Text Matters*, The Guild, Mumbai, 2019–20; *Exchanges*, The Whitworth, Manchester, 2018–; *Impulses in Drawing*, Vadehra Art Gallery, New Delhi, 2015; *The Guild Collection II: Outremer*, The Guild, Mumbai, 2015; *Ghar Ghar Ki Baat / Tales From Two Homes*, curated by Heidi Fichtner and Vikki McInnes, Margaret Lawrence Gallery, Victorian College of the Arts, University of Melbourne, 2013.

Peswani is currently Associate Professor of Practice, Head of the Department, Visual Arts, Ashoka University.

Rakhi Peswani
Splittings, 2022
Jute, Velvet, and Iron wire
36 x 15 x 1 inch



Rakhi Peswani
Uprootings, 2022
Jute, Velvet, and Iron wire
43 x 13 x 10 inch



Rakhi Peswani
Sprouting Plant, 2022
Jute, Velvet, and Iron wire
34.5 x 20 x 11 inch



Shibu Natesan

Shibu Natesan, born in Kerala, 1966, studied Painting at the College of Fine Arts, Trivandrum, Kerala, followed by a master's degree in Printmaking at the Faculty of Fine Arts, M.S. University, Baroda. In 1966–1967 he was the Artist in Residence at the Rijksakademie van Beeldende Kunsten in Amsterdam, and was awarded the Uriot prize.

Natesan's work has been exhibited widely. Select solo shows include *Uninterrupted Speech*, Vadehra Art Gallery, New Delhi, 2013; *External Affairs*, Grosvenor Vadehra, London, 2009; *Each One Teach One*, Jack Shainman Gallery, New York, 2007; *Vision Unlimited*, Grosvenor Gallery, London, 2005.

Some of his recent shows include *Past-Present-Continuous: 25 Years of The Guild*, The Guild, at Bikaner House, New Delhi, 2022; *Shibu Natesan, Tobit Roche & Mark Shields: Landscape*, Grosvenor Gallery, London, 2020; *Sightings: Out of the Wild*, curated by Roobina Karode, Kiran Nadar Museum of Art, 2019; *Summer Show 2018*, 1X1 Art Gallery, Dubai, 2018; *Group Show*, Sakshi Gallery, Mumbai, 2017.

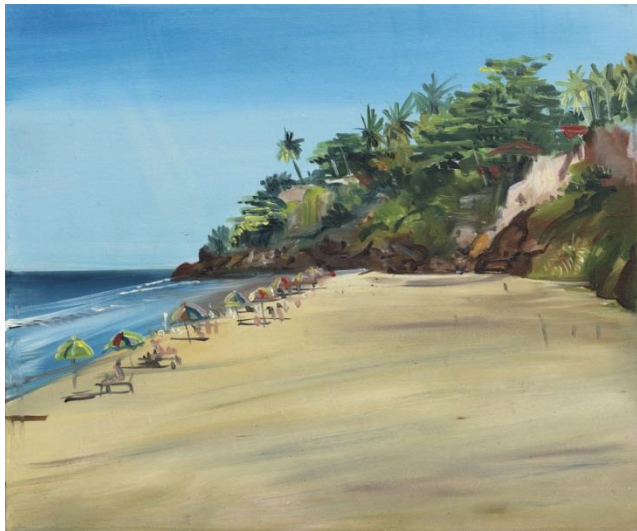


Shibu Natesan

Kavunji, Kodaikanal, 2015

Oil on canvas

12 x 16 inch



Shibu Natesan

Varkala Pavanasam Beach, 2019

Oil on panel

8 x 9.5 inch



Shibu Natesan

Tabo H P, 2022

Oil on panel

10 x 12 inch



Shibu Natesan

Kumbalgarh RJ, 2019

Oil on panel

12 x 15.5 inch

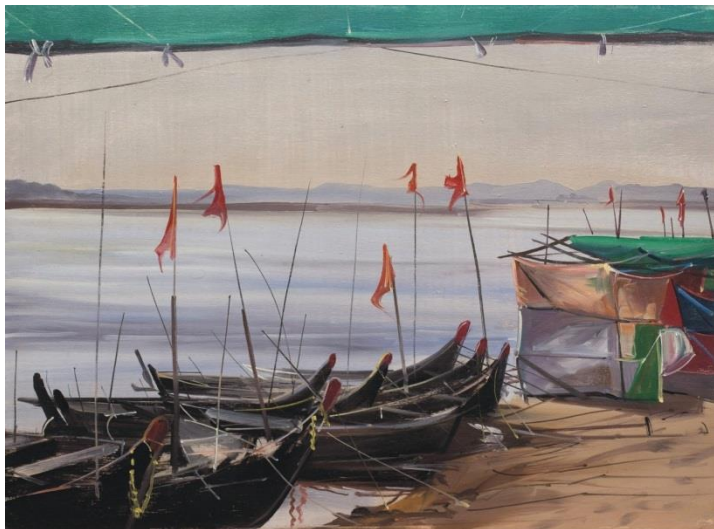


Shibu Natesan

Rajasthan, 2019

Oil on panel

12 x 16 inch



Shibu Natesan
Chandod, Gujarat, 2019
 Oil on panel
 11.7 x 15.7 inch



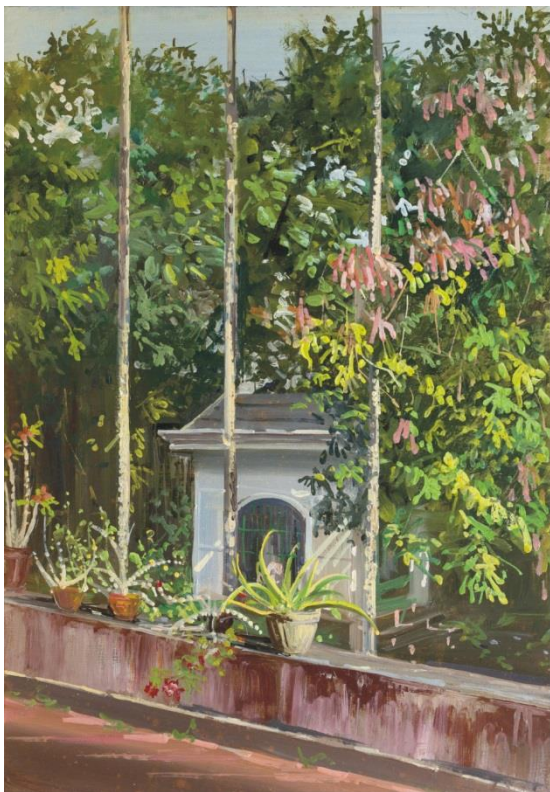
Shibu Natesan
Untitled, 2021
 Oil on panel
 14 x 15.7 inch



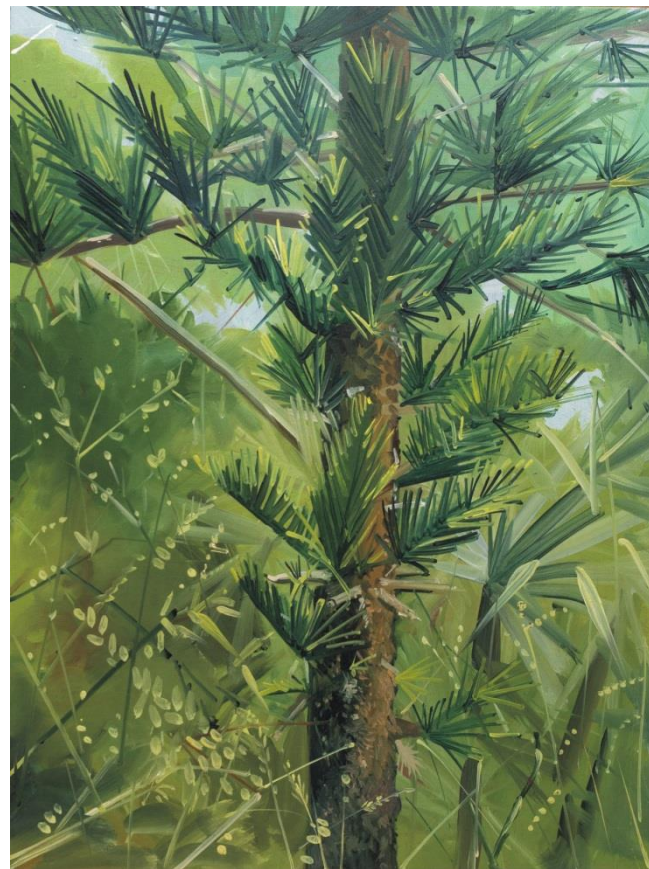
Shibu Natesan
Betel Nut Tree, 2019
 Oil on panel
 12 x 10 inch



Shibu Natesan
Untitled, 2020
 Oil on panel
 12 x 10 inch



Shibu Natesan
Dog's House, 2020
 Oil on panel
 14 x 10 inch



Shibu Natesan
Untitled, 2019
 Oil on panel
 15.8 x 12 inch



Shibu Natesan
Terrace, Artist's Home, Attingal,
Kerala, 2019
 Oil on panel
 7 x 9.5 inch



Shibu Natesan
Untitled, 2020
 Oil on panel
 12 x 12 inch



Shibu Natesan

A Silent Conquering Army, 2021

Oil on panel

11.8 x 9.5 inch



Shibu Natesan

Beads, 2020

Oil on panel

8 x 9.4 inch

Shibu Natesan
Chithralayanm, Attingal
Artist's Home, 2021
Oil on panel
12 x 9.5 inch



T. V. Santhosh

T.V. Santhosh, born in Kerala, India, 1968, obtained his graduate degree in painting from Kalabhavan, Santiniketan and his master's degree in Sculpture from the Maharaja Sayajirao University of Baroda. His art cites histories of violence, injustices, war, terrorism and media propaganda. His art practice has stood as a strong commentary on the current social and political crisis of our lives.

Santhosh's works have been shown widely in museums and biennales. Some of his museum shows include *Lokame Tharavadu (The World is One Family)*, curated by Bose Krishnamachari, Kochi Biennale Foundation, 2021; *forming in the pupil of an eye*, curated by Sudarshan Shetty, Kochi-Muziris Biennale, 2016; *The Great Game*, curated by Marco Meneguzzo and Mazdak Faiznia, National Pavilion of Iran, 56th Venice Biennale, 2015; *Making History*, Colombo Art Biennale, 2014; Heritage Transport Museum, curated by Priya Pall, New Delhi, 2013.

Select solo shows include *Common Wall*, Grosvenor Vadehra, London, 2014; *The Land*, Nature Morte, Berlin, 2011; *Burning Flags*, Aicon Gallery, London, 2010; *Blood and Spit*, Jack Shainman Gallery, 2009; *Living with a Wound*, Grosvenor Vadehra, London, 2009, all in collaboration with The Guild.

His art practice has been widely written about, including in two books, *T. V. Santhosh: Unresolved Stories* (The Guild, 2008) and *Blood and Spit: Living with a Wound* (The Guild and Jack Shainman Gallery, 2009). Other catalogues with solo shows include *One Hand Clapping/Siren*, *Living with a Wound*, and *False Promises*.



T. V. Santhosh
Window to the World, 2022
Watercolour on paper
20 x 30 inch



T. V. Santhosh
Untitled, 2021
Oil on canvas
24 x 30 inch

T. V. Santhosh
Jumbled Monologue - II, 2022
Oil on canvas
48 x 36 inch



The Guild

The Guild was established in 1997 with an aim to function as a semi-institutional space within the bustling art-hub of Mumbai, India. Since its inception, it has been providing a platform for discursive practices, innovation and experimentation in contemporary art. The Guild represents a roster of artists of diverse generations who have brought in robust dialogue within and across their disciplines. The Gallery has held major retrospectives of Navjot Altaf, Sudhir Patwardhan, and G. R. Iranna in collaboration with premier national art centres.

The gallery has published a number of books with essays by preeminent critics and curators on contemporary Indian artists, such as Sudhir Patwardhan, Navjot Altaf, Jyoti Bhatt, K.G. Subramanyan, and T.V. Santhosh, amongst others.

The Guild celebrates its twenty-fifth anniversary in 2022. For this silver jubilee year, The Guild is organising a series of critical curated exhibitions marking the trajectory the gallery, its artists, and the Indian art world has taken in the past twenty-five years.



Copyright © The Guild, 2022 | All rights reserved
The Guild, Alibaug
1028, Ranjanpada,
Mandwa Alibaug Road,
Alibaug 402201

The Guild, Mumbai
1/A, Pipewala Building, 4th Pasta Lane, Colaba
Mumbai – 400 005
Ph: + 91 22 22875839 / 22876211
theguildart@yahoo.com / theguildart@gmail.com
www.guildindia.com

For sales enquiries contact us at
teamattheguild2@gmail.com
theguildart@yahoo.com